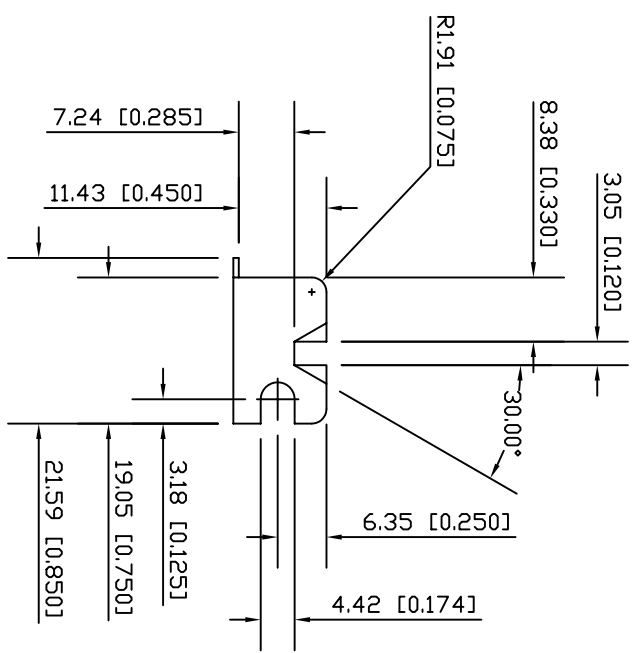
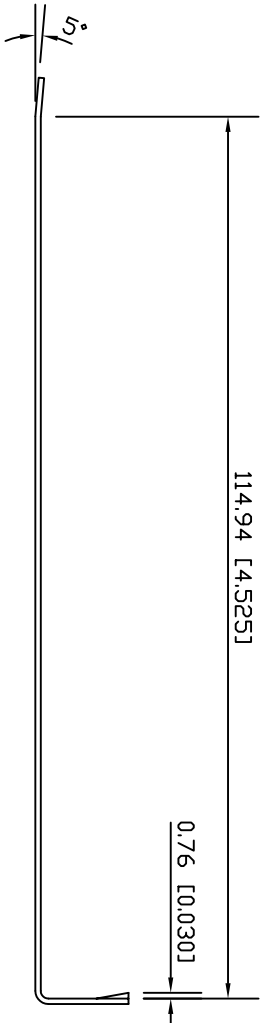


NOTES
 * MATERIAL:SPCC CQ1 R20
 * THICKNESS 0.80(0.031)
 * FINISH:NICKEL PLATED.

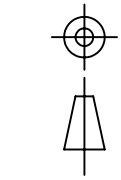


TOLERANCES (EXCEPT AS NOTED):
 ANGULAR $\pm 1^\circ$
 RADIUS $\pm 0.25 [0.010]$
 HOLE $\pm 0.13 [0.005]$
 MM XX = ± 0.51 X.XX = ± 0.25
 INCH .XX = ± 0.02 .XXX = ± 0.01

DRAW. *Shen Der Long* CHECK. DATE JUNE 4, 1994

APPD. DATE TITLE: COMPUTER BRACKETS

E-MAIL:hapco@earthlink.net
 TEL:(949)474-8474
 FAX:(949)553-8554
 UNIT mm/inch
 DRAWING NO. CB0006



P/N THG 6000

THG HAPCO GROUP

1921 E. Carnegie Ave. Bldg.# 3-O Santa Ana, Ca. 92705 USA